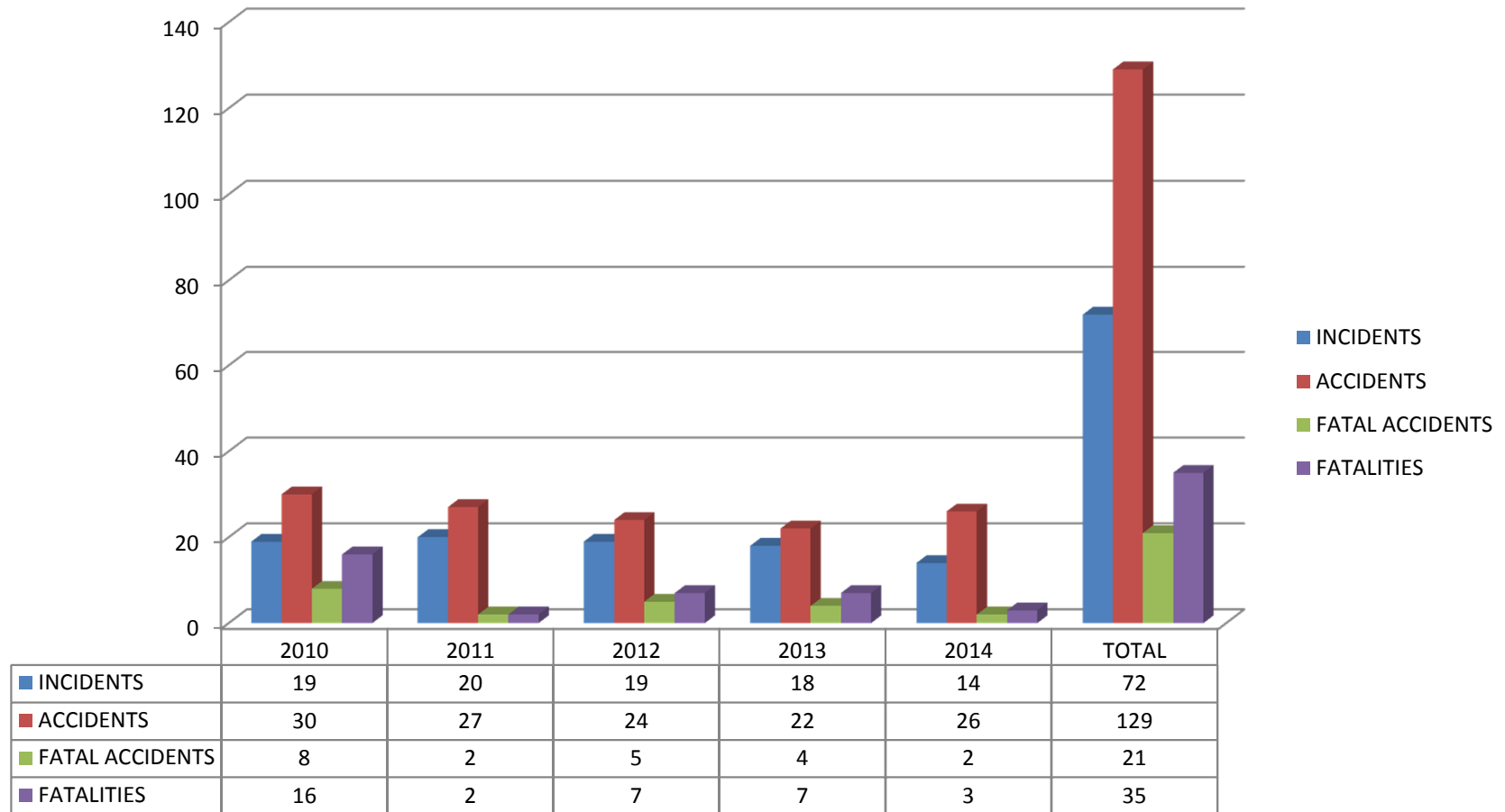
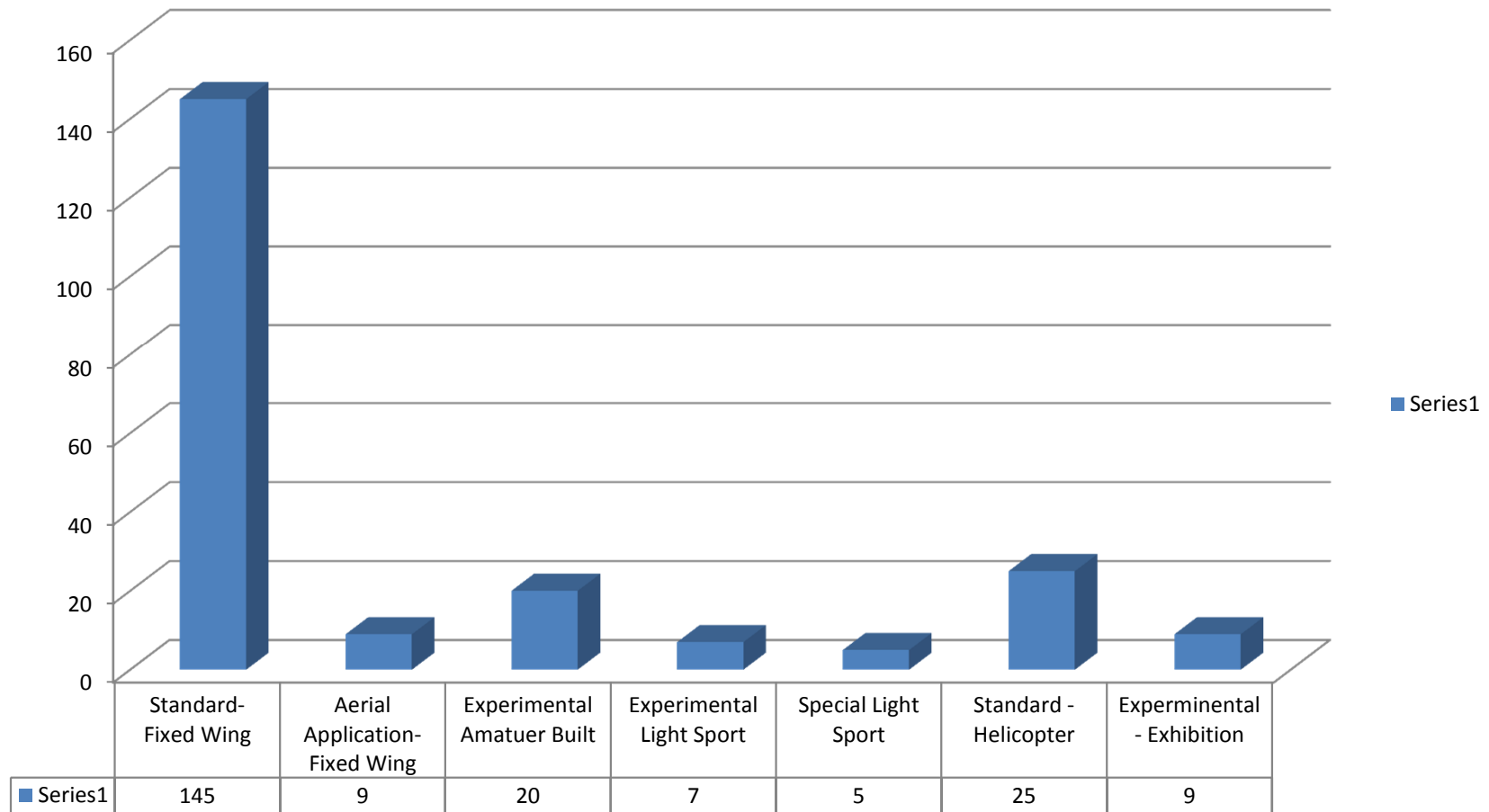


# SAT – FSDO Total Events 5 Year Period

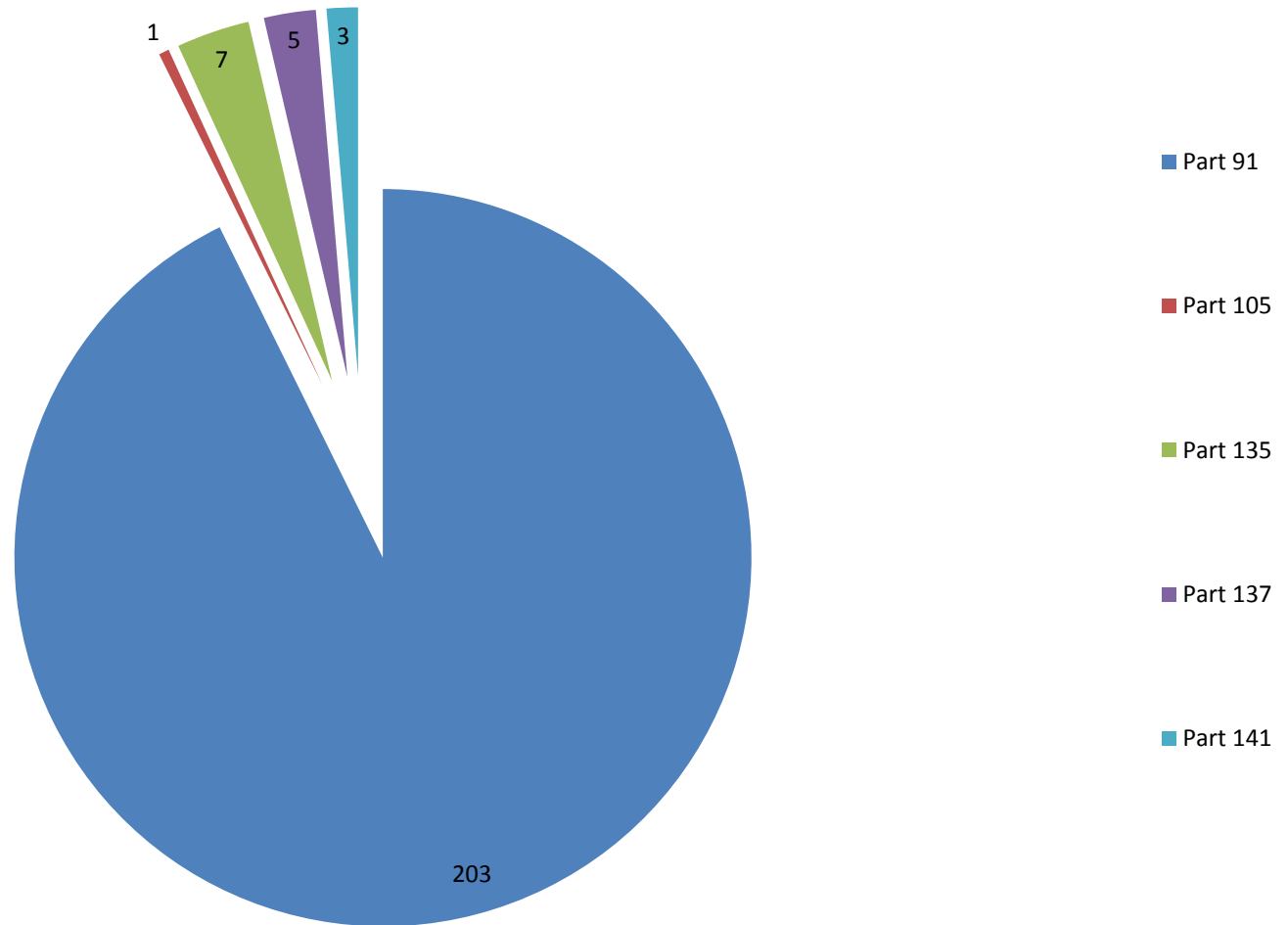


**Total Mishaps Investigated by the SAT-FSDO From 10-01-2010 to 8-14-2014 = 201**

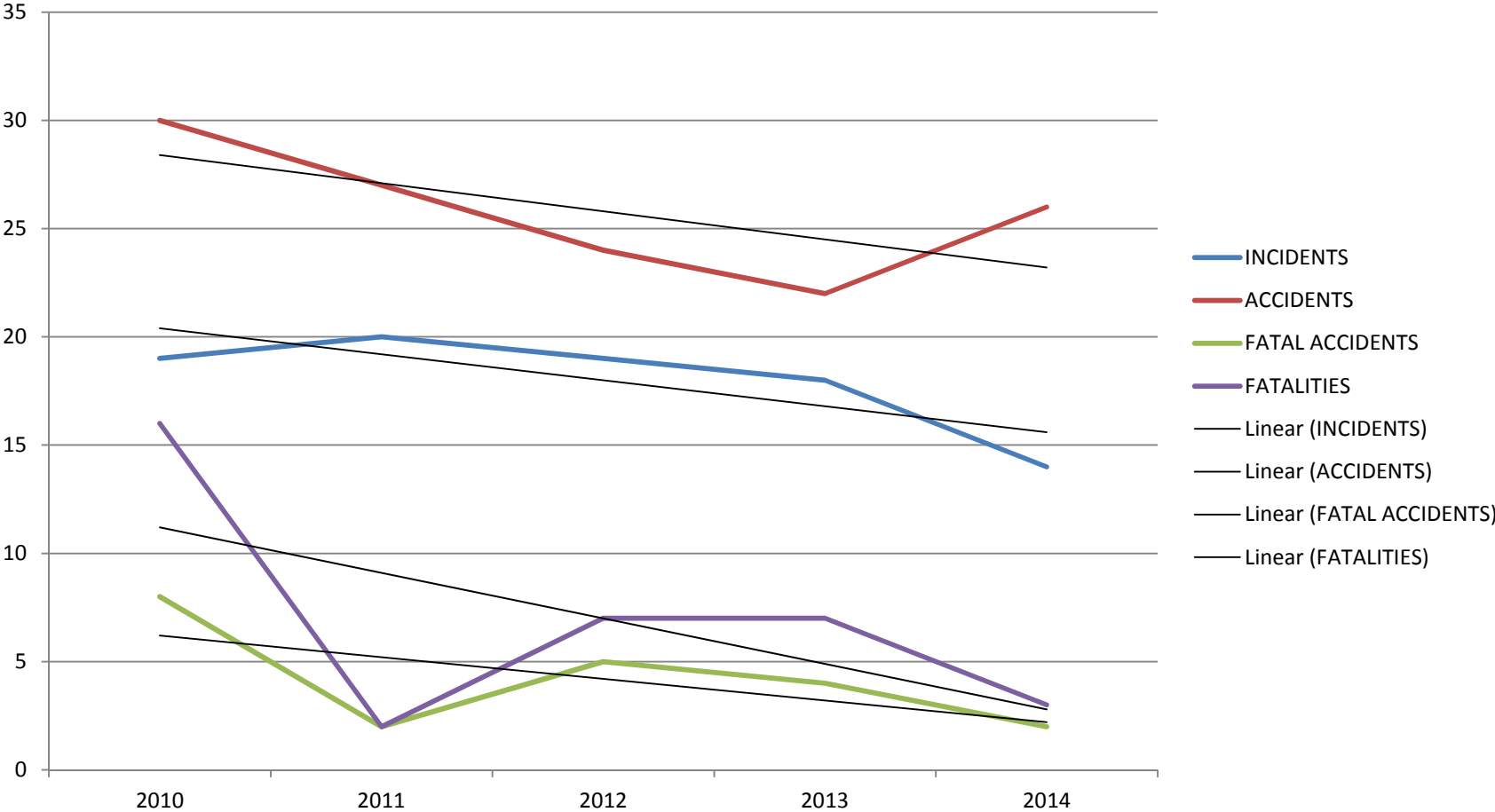
# Accident/Incident Aircraft Certification Basis 2010 – 2014



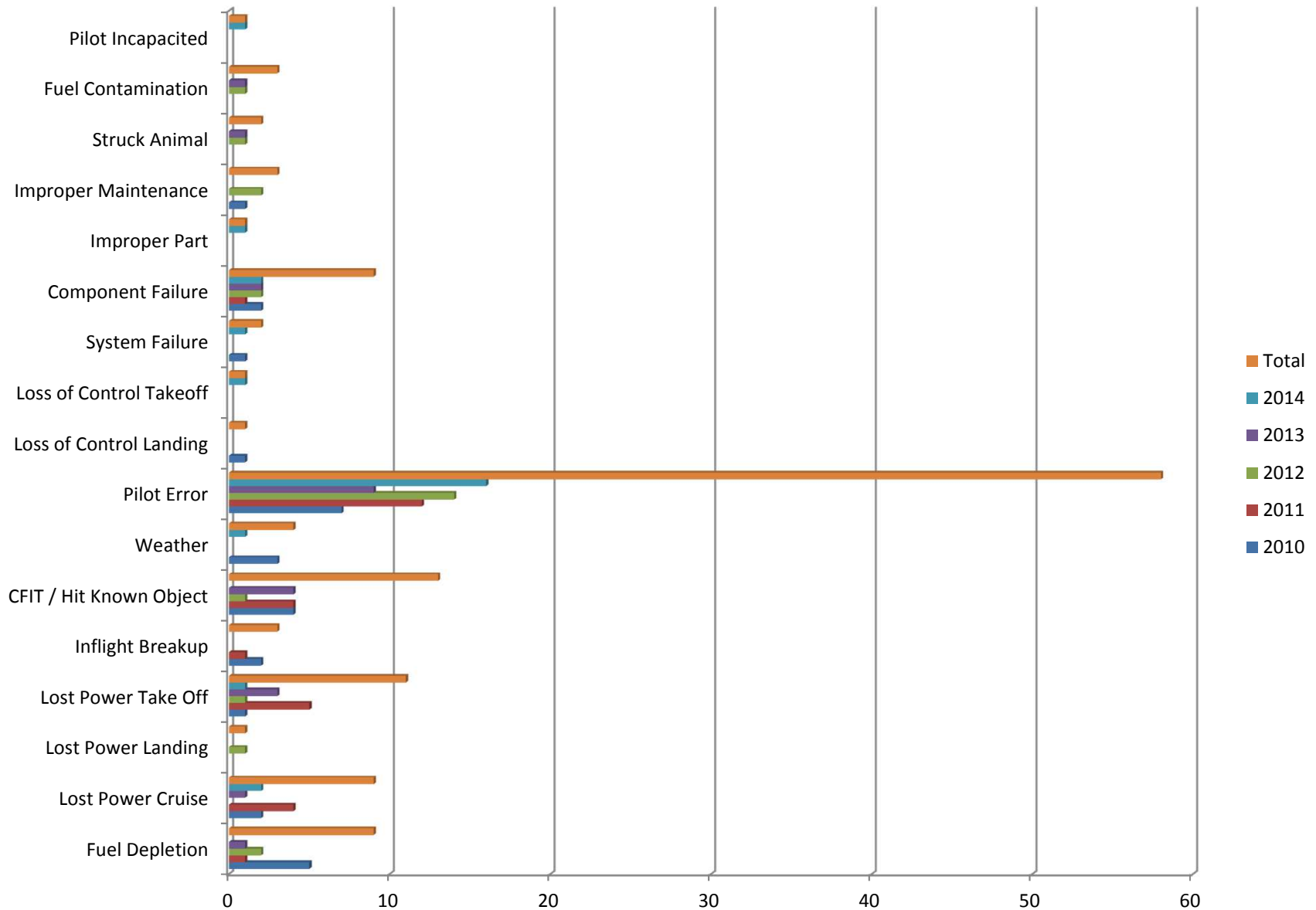
# Accident/Incident by Aircraft Operating Rule 2010 – 2014



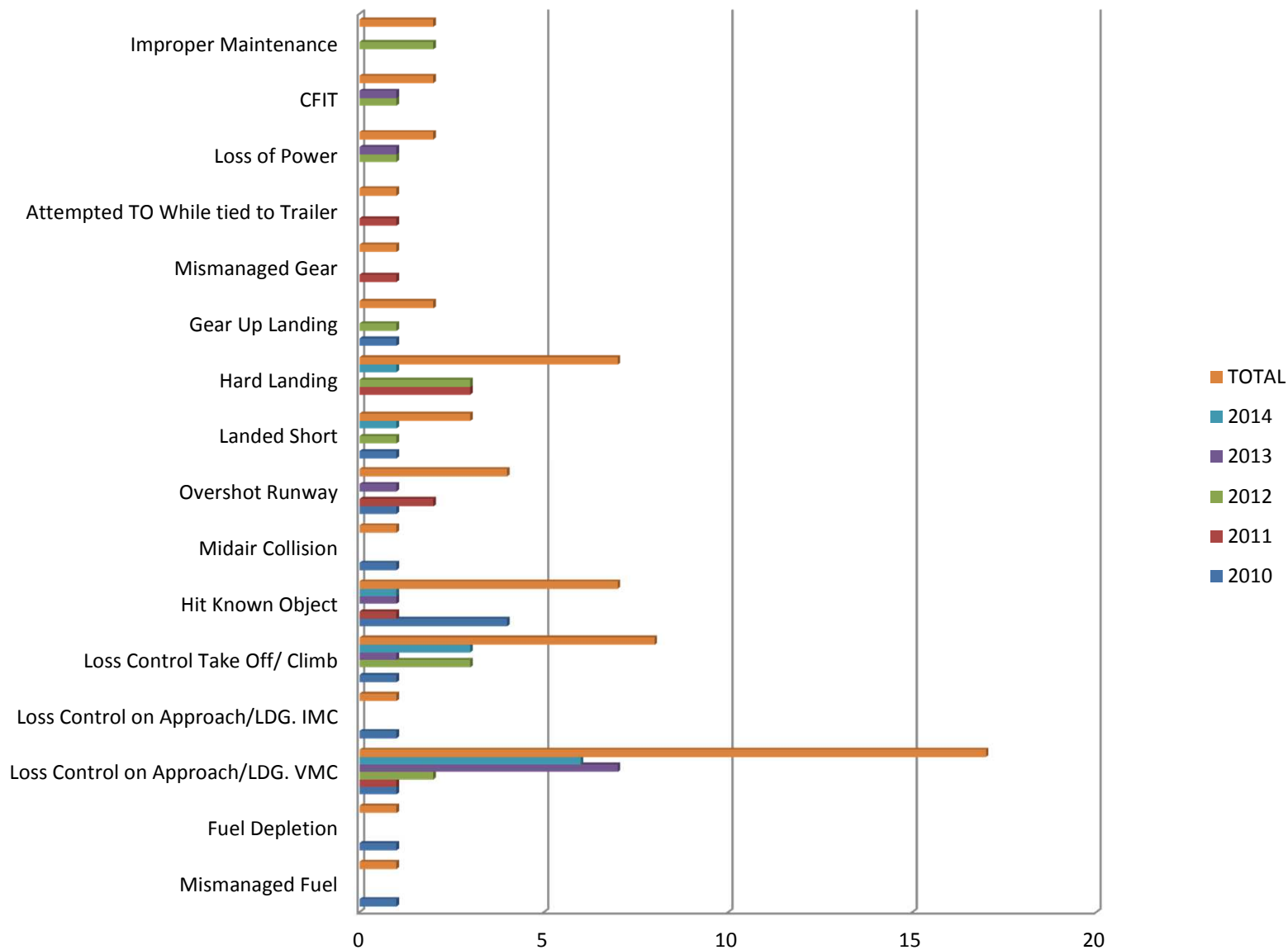
# 5 Year Event Trending Analysis



# 2010 – 2014 Accident Only Casual Factors as Recorded on 8020-23



# Pilot Error (Drill Down) 2010 – 2014



BE-A36 Tilden, TX. (muddy dirt strip) 10-06-13

After being stuck in the mud, pilot got pulled out and took off from a 1500 ft. wet/muddy strip with an obstacle at the end. At 40' AGL stalled, hit the ground and cartwheeled the aircraft. The pilot (sole occupant) suffered serious injury. Pilot - 44709



10-23-13 Eagle Pass Eurocopter AS350 During auto rotation training flight, skids dug into turf, aircraft pitched up and rolled over on it's side. Two soles onboard no injuries. CFI - Remedial Training





10-25-13 Cessna 172M, Raymondville, TX. The aircraft lost power on final approach due to fuel starvation.

Touched down in a plowed field and flipped over. 1 minor injury Investigation revealed violation of the following No pilot certificate, No medical certificate, No aircraft registration, No valid Airworthiness Certificate, Annual Inspection overdue by 4 years, Reckless Operation. Civil penalty - pending



**PA28-140 Engine lost power on takeoff. Restricted induction airflow due to the wrong induction air tubing installed, and restricted exhaust flow. The pilot received serious injuries. Pilot will be counseled on engine out procedures.**



**Leakey, TX. - Zenith 601XL Canopy opened on takeoff distracting the pilot, resulting in steep angle and hard landing. (1 serious injury)**



**Cotula, TX. Pilot Error –Cessna 172 hard landing and loss of control.  
Flight instruction flight. Loss of control on Ldg. CFI took controls too  
late. 1 minor injury, Pilot 44709**



**New Braunfels TX. PA 24-250**  
**Investigation revealed the fuel tanks were filled to the top, with air.**  
**Open investigation**



**Champion 7GCB - Loss of rudder control. During go around attempt drifted off center line and stalled. Minor Injuries to both people onboard. Pilot, Mechanic, CFI, and IA all the same person?**



N734BY Padre Island 32 miles south of Baffin Bay. Engine lost power enroute to south padre island. Cause unknown at this time. 1 Minor injury



**Cessna 172 -Llano, TX. Lost power on takeoff. Engine analytical tear down is pending. 3 people onboard – no injuries.**





**Stinson – Mooney M20TN Pilot was doing touch and goes on runway 14 but was lined up for 9, when questioned by ATC he turned to base for 14. Pilot claims the engine did not respond to the throttle resulted in a stall and off airport landing. No Injuries, 44709 pending**



Pleasanton, TX. N167T With 5 PAX the 5000 hr. ATP pilot attempted downwind landing, going to fast executed a go around. Stalled aircraft impacted ground left of runway. All PAX sustained minor injuries. 44709

